

EXPERIENCE



Machining Center T32 Takumi



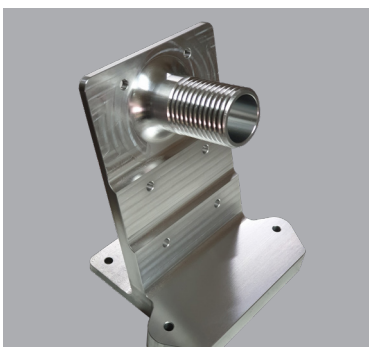
Wire erosion



RIGOR



CONFIDENCE



USIMECA - Metalworking, Lda., is an industrial company, founded in 1988, dedicated to the manufacture, trade, export and import of metallomechanical parts and structures for molds.

With **more than 30 years of experience**, the company develops precision components both in the national and international market for different sectors, among them modes for plastics, glass and ceramics, aeronautics, steelmaking, machine manufacturers.

We develop:

- Components for industrial machines and equipment;
- Structures and accessories for molds;
- Turning of metal-mechanical parts and molds;
- Recovery of parts;
- Machining of metals and polymers.

Services:

- Conventional and CNC milling;
- Conventional and CNC turning;
- Deep drilling;
- Flat grinding;
- Wire erosion;
- Grinding;
- Three-dimensional control.

Software				
PowerMill		PowerShape		
Feature Cam		Software CAD/ CAM		
Lemoine-RTM (Specialized drilling program)				
Qt.	CNC Drilling	X	Y	Z
1	Deep Drilling Machine Buck TBFZ 1600	1600	800	1200
Qt.	Conventional Drilling	X	Y	Z
3	Boring Machines	1800	1600	1250
1	Radial Drilling Machine	-	-	-
Qt.	CNC Lathe			
1	Lathe Gurutzpe Ø 800 x 1500 (retrofiting)			
1	Lathe Goodway Ø 460 x 1500			
1	Lathe Romi com alimentador			
1	Lathe Hurco Ø 256 x 455			
1	Lathe DMG MORI Ø 366 x 1255			
Qt.	Lathe conventional			
1	Lathe conventional Ø 1400 x 6000 E.P.			
6	Lathe conventional			
Qt.	Rectification	X	Y	Z
1	Flat grinding	1200	500	500
1	Flat grinding	1500	800	600
1	Flat grinding	4100	1400	-
1	Cylindrical grinding machine TOS Ø 340 x 160	-	-	-

Qt.	CNC Milling	X	Y	Z
1	CRONUM 600.5X	600	600	500
1	Kolb studioline M	7900	1650	650
2	Bridge Type Machining Center Hartford	3050	2100	780
		1020	600	630
2	Bridge Type Machining Center Takumi	1200	2250	800
		1600	1300	700
1	Machining Center Optimal	1500	760	600
1	Horizontal Machining Center Matsuura	1050	920	875
2	Bed type Milling Machine Nicolas Correa	2000	800	800
2	Machining Centers MAS	1000	600	600
		750	500	500
1	Machining Center OPTIMA with vacuum table	2500	1500	400
1	Machining Center Fuland GLC-1265	1200	650	650
1	Machining Center Kolb studioline M	7900	1650	650
Qt.	Conventional Milling	X	Y	Z
5	Milling Machines	-	-	-
2	Universal Milling Machines	-	-	-
Qt.	Three-dimensional control	X	Y	Z
-	Measuring system 3D Nikon Altera	1016	711	610
Qt.	Electro-erosion	X	Y	Z
1	Penetration electric-erosion CDM	600	400	400
1	Wire erosion, FANUC Robocut α - C600i	600	400	410



Rua da Mata Nacional N.º176 • 2410-229 Pousos LEIRIA

T. (+351) 244 801 590 • F. (+351) 244 813 569 • E. usimeca@usimeca.pt | cad@usimeca.pt • www.usimeca.pt